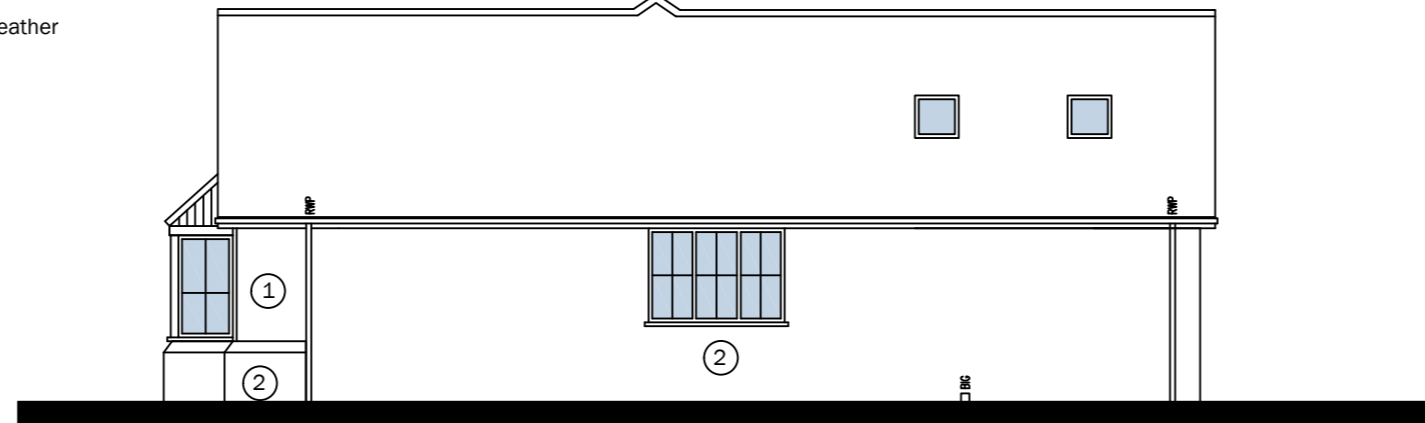




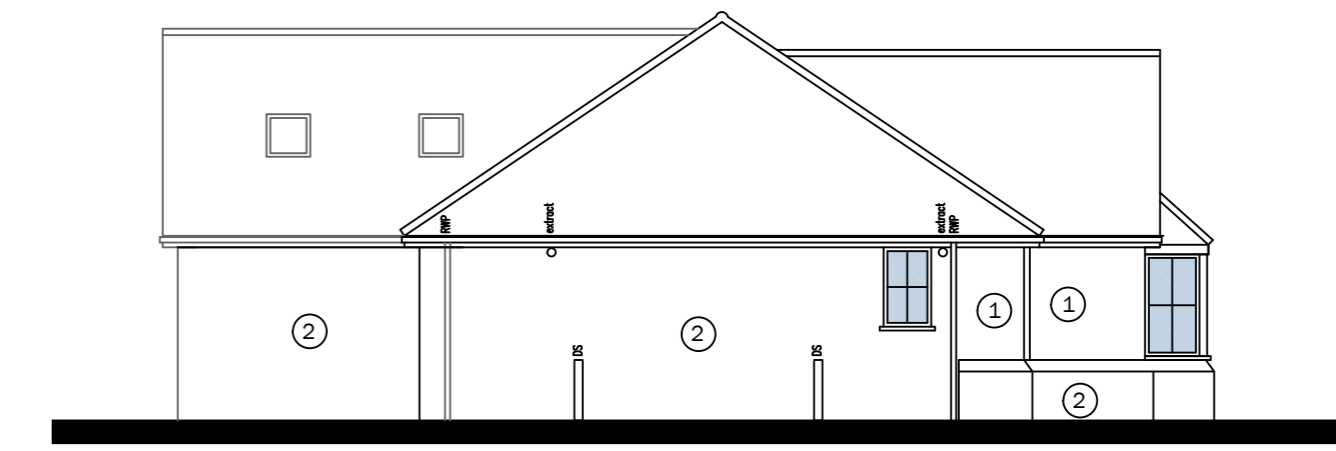
Proposed Front Elevation



Proposed Flank Elevation



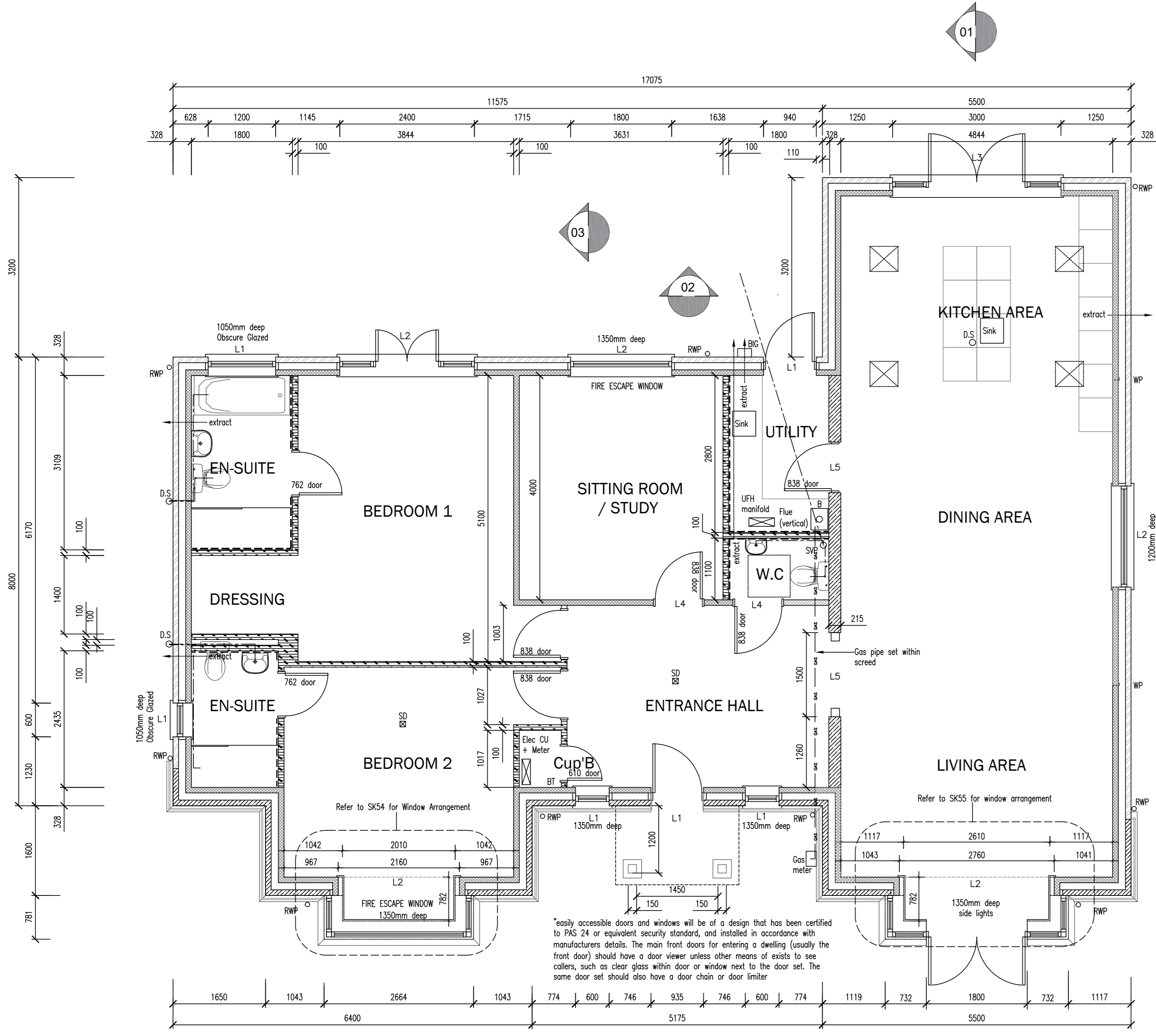
Proposed Rear Elevation



Proposed Flank Elevation

MATERIALS:

- 1) Painted timber weather boarding
- 2) Face brickwork



WP = Denotes stainless steel windpost, 125 x 70 x 4 WPA by Wincro fixed to foundation and timber wall plate using standard Wincro details.

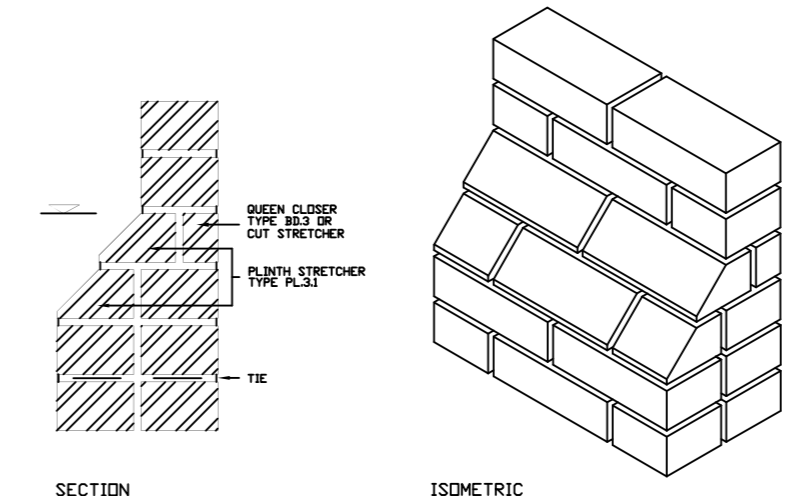
Wall Key

- External grade concrete aggregate blockwork Hanson Fenite or similar (min density 1350kg/m²).
- 3.6N/mm² blockwork (Celcon Standard)
- Face brickwork 102mm
- 50 x 100mm timber stud fully filled with "rockwool" insulation 12.5mm plasterboard to each face
- 50 x 100mm timber stud fully filled with "rockwool" insulation with 12mm WSP grade plywood and moisture resistant plasterboard

- LINTELS:
- Pressed Steel lintels by Catnic with min 150mm end bearing unless otherwise noted
 - L1- Catnic CG110/100
 - L2- Catnic CH110/100
 - L3- Apex lintel (special)
 - Precast concrete lintels by NAYLOR with min 150mm end bearing unless otherwise noted
 - L4- ER2 (100 x 140mm deep)
 - L5- 2 x R9 (100 x 215mm deep)

KEY

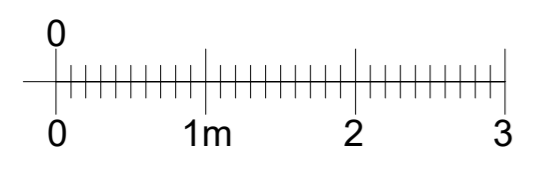
- T.J Tied joint
- C.J Contraction joint
- E.J Expansion joint



Plinth brick work detail (nts)

REFER TO DRAWING 500 FOR BELOW GROUND DRAINAGE

Proposed Floor Plan



REV	DATE	REV	DRAWN	CHECKED
C1	01.11.16	Window setting out. Construction Issue.	RDC	RDC

RD Consulting
sustainable technical solutions
8 Ruffes Close, Rayleigh, Essex, SS6 8EW
T: 01286 741388
F: 01286 741388
E: info@rdconsult.co.uk W: www.rdconsult.co.uk

SILVERSWAN HOMES LTD
PLOT 2
75 MILL ROAD
STOCK, ESSEX

DIMENSIONED FLOOR PLANS

DATE	DRAWN	PROJ No.	
10.09.16	IAB	15018	
SCALE	CHKD	DRG. No	REV
1:50 & 1:100 @A1	RD	120	C1

THIS DRAWING IS COPYRIGHT OF RD CONSULTING AND MAY NOT BE REPRODUCED WITHOUT PERMISSION
STAGE
Construction