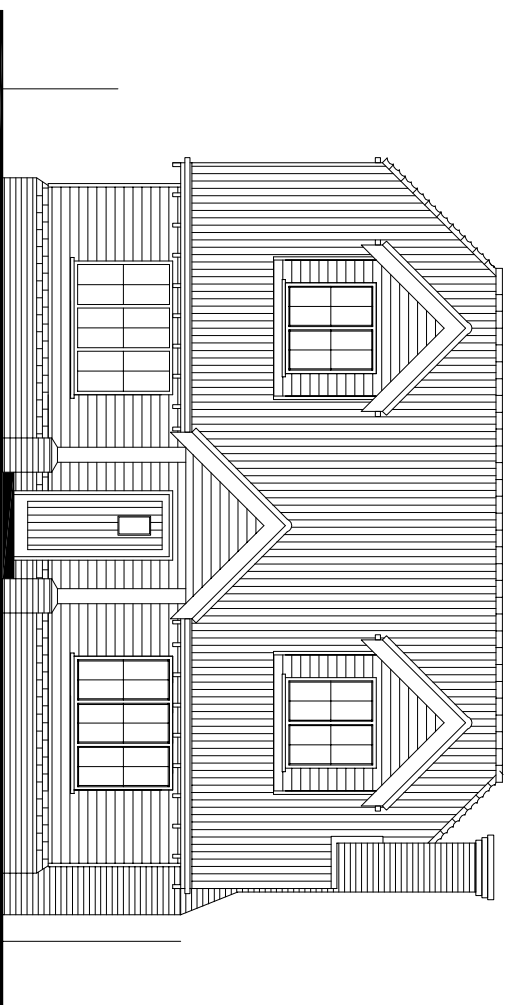
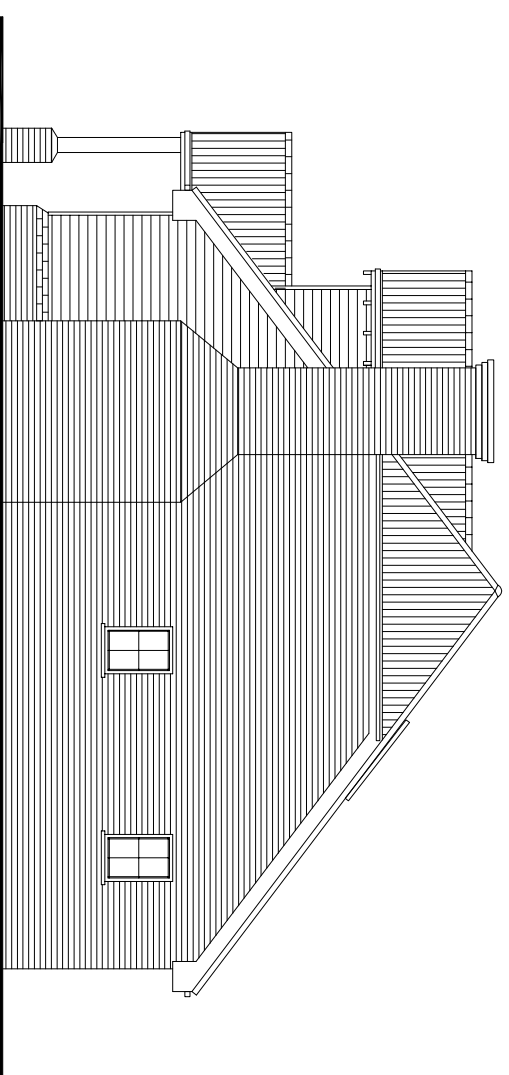


Materials:

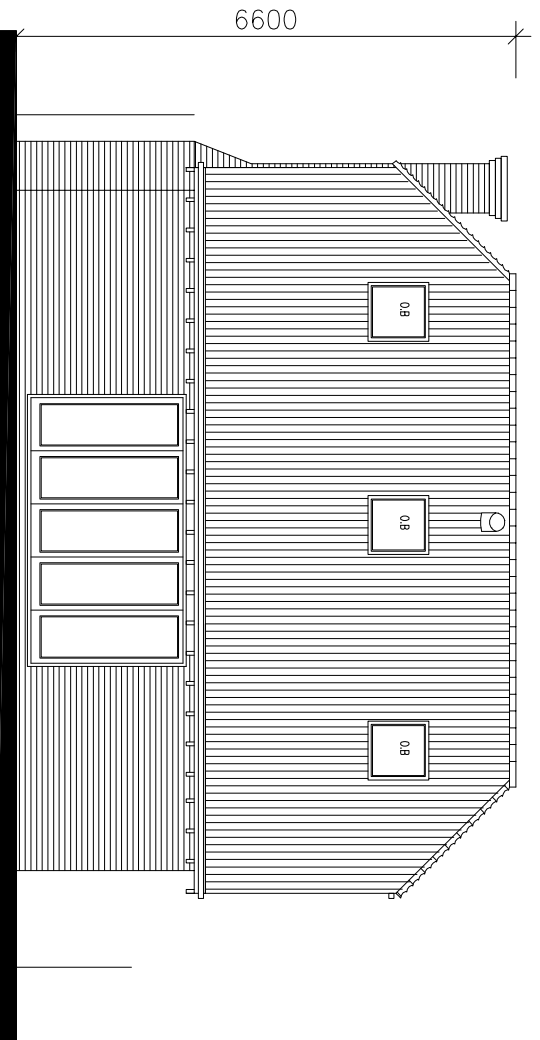
Facing bricks to be Old Essex Red Multi or similar  
 Plain clay roof tiles  
 Painted timber windows  
 Painted feather edge boarding to dormers



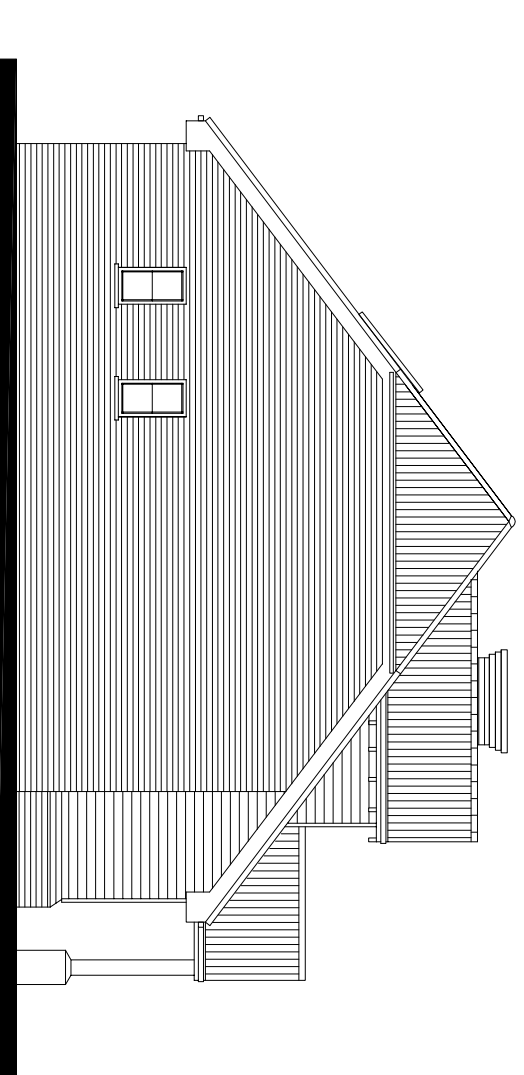
front



flank



rear



flank

**GENERAL NOTES**

- This drawing is to be read in conjunction with all other relevant Architect's, Engineers & Specialist drawings, details and the relevant Health and Safety Plan (as appropriate).
- DO NOT SCALE FROM THIS DRAWING. Use figured dimensions only.
- All dimensions to be confirmed prior to construction.
- ASBESTOS: Where the works are to an existing building, (or include demolition), all site personnel and visitors are to have training in accordance with Regulation 10 of The Control of Asbestos Regulations 2006 and/or in accordance with the appropriate legislation current at the time. All works in respect of materials containing asbestos or suspected of containing asbestos are to be carried out strictly in accordance with current legislation, if in doubt seek guidance from the Health and Safety Executive.

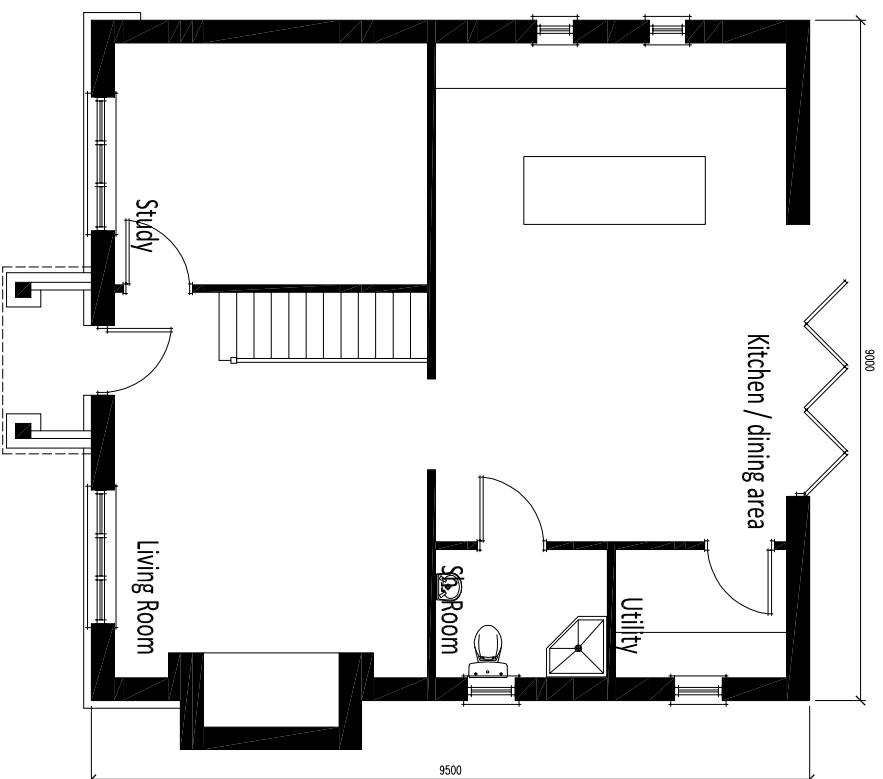
REV	DATE	REV	BY	CHECKED

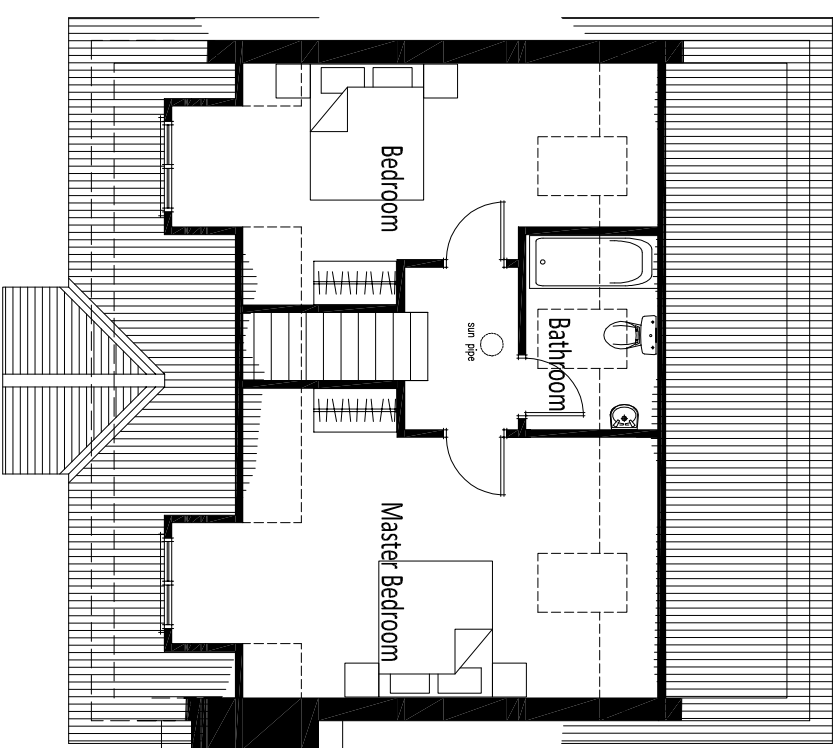
<b>RD Consulting</b> sustainable technical solutions 87, Church Lane, Kettlewell, West Yorkshire LS23 7EY T: 01937 541388 F: 01937 541388 E: info@rdconsulting.co.uk W: www.rdconsulting.co.uk		
Silverswan Services Ltd 55 Birch Lane Stock Essex		
Plot 2 Elevations		
DATE	BY	NO. IN.
12.12.11	LAB	11007
SCALE	CHKD	SCALE
1:100 @A3	RD	23
THE DRAWING IS THE PROPERTY OF RD CONSULTING AND IS NOT TO BE REPRODUCED WITHOUT PERMISSION		BY
Pre App		P1

**GENERAL NOTES**

- This drawing is to be read in conjunction with all other relevant Architect's, Engineers & Specialist drawings, details and the relevant Health and Safety Plan (as appropriate).
- DO NOT SCALE FROM THIS DRAWING. Use figured dimensions only.
- All dimensions to be confirmed prior to construction.
- ASBESTOS: Where the works are to an existing building, (or include demolition), all site personnel and visitors are to have training in accordance with Regulation 10 of The Control of Asbestos Regulations 2006 and/or in accordance with the appropriate legislation current at the time. All works in respect of materials containing asbestos or suspected of containing asbestos are to be carried out strictly in accordance with current legislation, if in doubt seek guidance from the Health and Safety Executive.



PROPOSED GROUND FLOOR  
74sq.m G1A



PROPOSED FIRST FLOOR  
53sq.m G1A

REV	DATE	REV	BY	CHECKED

**RD Consulting**  
sustainable technical solutions  
87, Haulage Way, Colchester, Essex, CO1 1JH  
T: 0206 211388  
F: 0206 211388  
E: info@rdconsulting.co.uk  
W: www.rdconsulting.co.uk

Silverswan Services Ltd  
55 Birch Lane  
Stock  
Essex

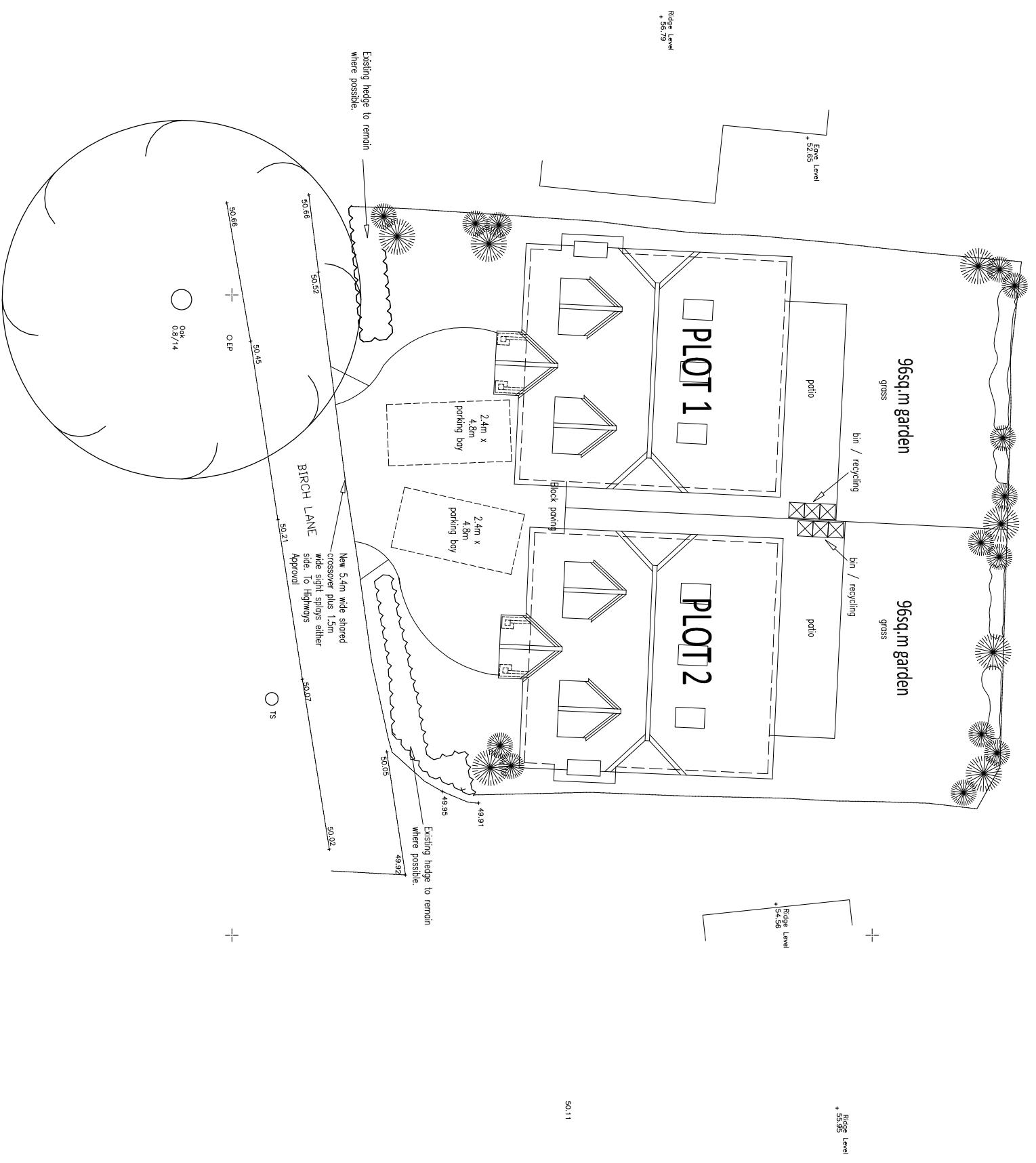
Plot 2 Floor Plans

DATE	BY	NO.	SCALE	BY
12.12.11	LAB	11007		
1:100 @A3	RD	22		P1

PREPARED BY: RD  
CHECKED BY: RD  
APPROVED BY: RD

Pre App

- GENERAL NOTES**
- This drawing is to be read in conjunction with all other relevant Architect's, Engineers & Specialist drawings, details and the relevant Health and Safety Plan (as appropriate).
  - DO NOT SCALE FROM THIS DRAWING. Use figured dimensions only.
  - All dimensions to be confirmed prior to construction.
  - ASBESTOS: Where the works are to an existing building, (or include Demolition), all site personnel and visitors are to have training in accordance with Regulation 10 of the Control of Asbestos Regulations 2006 and/or in accordance with the appropriate regulation current at the time. All works in respect of materials containing asbestos shall be carried out in accordance with current legislation. If in doubt seek guidance from the Health and safety Executive.



REV	DATE	REV	DESCRIPTION	DRAWN	CHECKED
P2	Apr 2012		Revised parking layout, reduced crossover length and sight spoys added	LAB	RD
P1	Feb 2012		Observer moved and landscaping alterations to all corners	LAB	RD
REV	DATE	REV			

**RD Consulting**  
sustainable technical solutions

Silverswan Services Ltd  
55 Birch Lane  
Stock  
Essex

Proposed Site Plan

DATE	DRAWN	REVISED
12.12.11	LAB	11007
1.2.00	RD	26
THIS DRAWING IS COMPART OF #0		SIZE
CONSULTING AND ARCHITECT		Pre App