

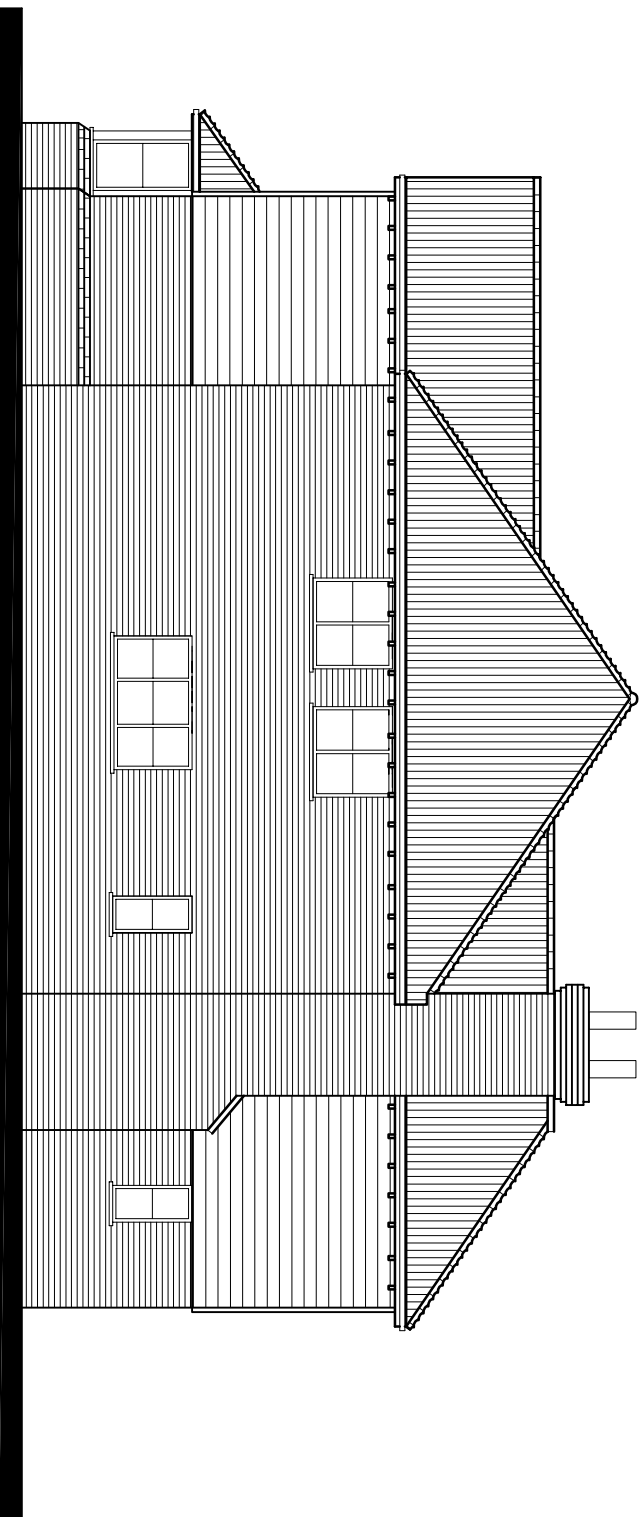
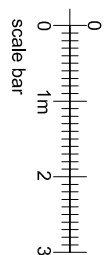
GENERAL NOTES

- This drawing is to be read in conjunction with all other relevant Architect's, Engineers & Specialist drawings, details and the relevant Health and Safety Plan (as appropriate),
- DO NOT SCALE FROM THIS DRAWING. Use figured dimensions only.
- All dimensions to be confirmed prior to construction.

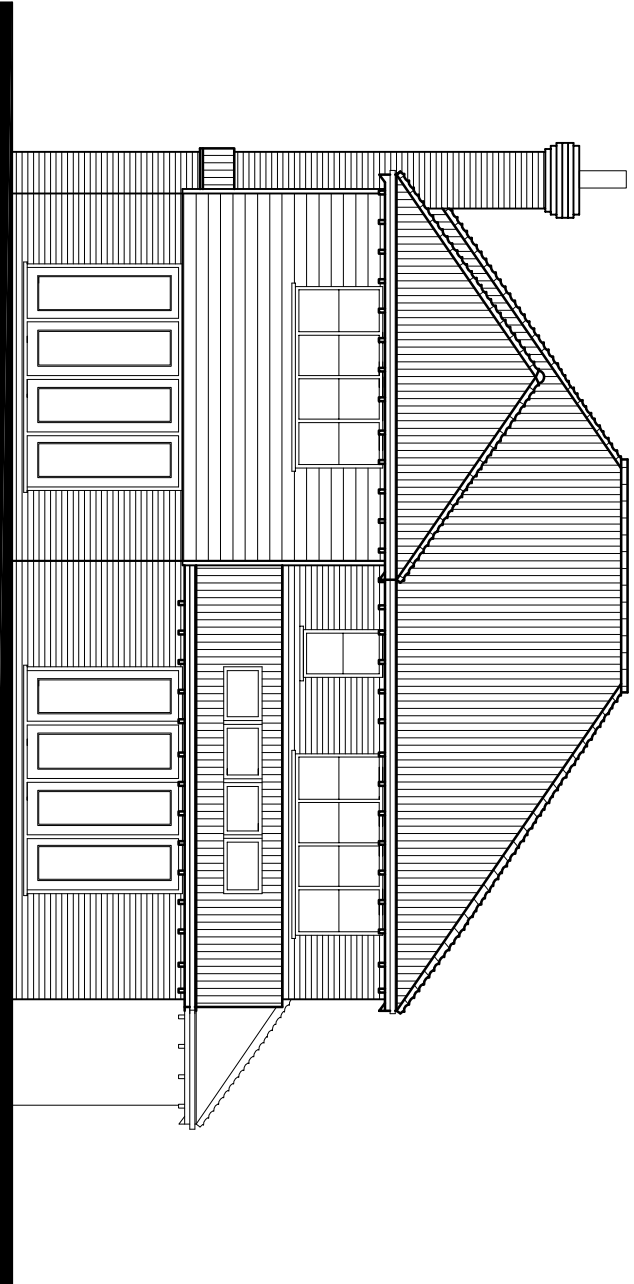
- **ASSESSORS:** Where the persons are to an existing building, (or include demolition), all site personnel and visitors are to have training in accordance with Regulation 10 of the Control of Asbestos Regulations 2006 and/or in accordance with the appropriate legislation current at the time. All works in respect of materials containing asbestos or suspected of containing asbestos are to be carried out strictly in accordance with current legislation, if in doubt seek guidance from the Health and safety Executive.



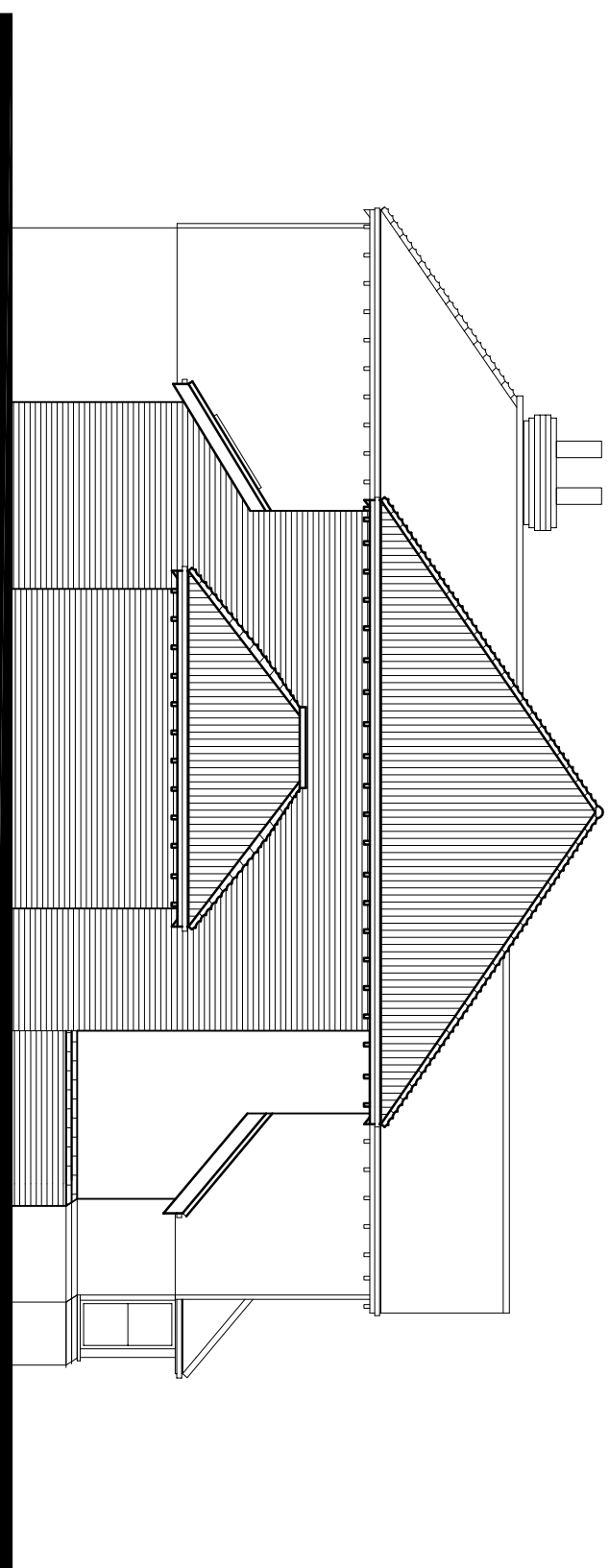
Front



F l a n k



Rear



Flank

D	14.03.12	Peer projection & replies	MB	70
C	30.8.12	Root Pitches Genral revisions	MB	70
B	12.8.12	Redrum	MB	70
A	28.6.12	Gen. mods to pre app comments	MB	70
	DME	REV	DSMM	CHECKED

RD Consulting

© 2011 Blackwell Publishing Ltd, *Journal of Internal Medicine* 270: 103–111

T. 01268 741368

F: 01268 741358
E: info@rdsconsult.co.uk

Silver Swan Homes

10 The Paddock,
Stock

Plot 1

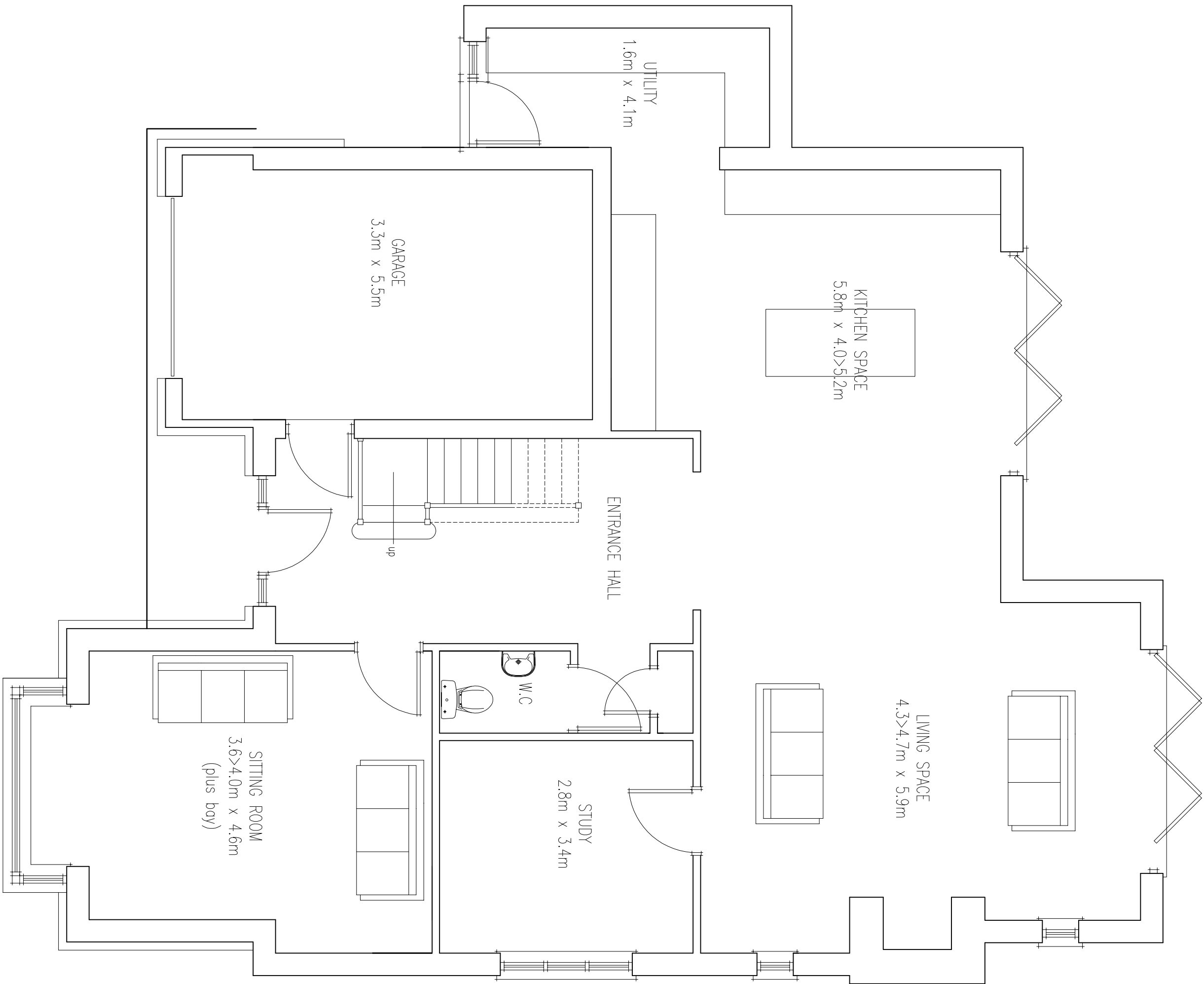
Elevations

DATE	DDMMYY	PROJ No.
22.05.12	IAB	12005
SCALE	CMTD	DWG. No.
1:100 @A1	RD	2
		REV
		D

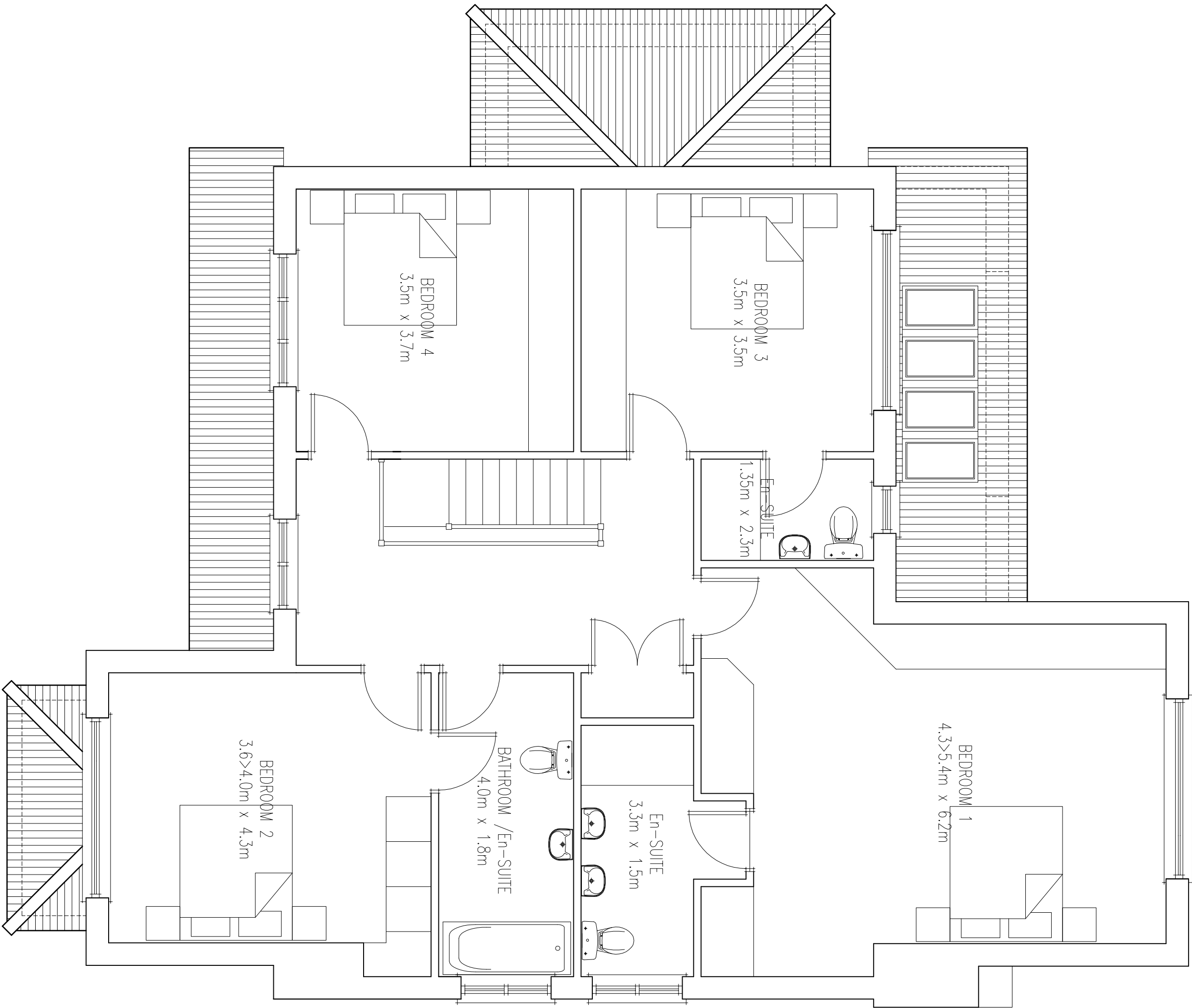
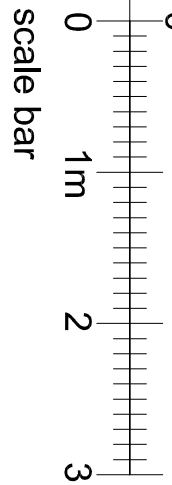
THIS DRAWING IS COPYRIGHT OF RD
CONSULTING AND MAY NOT BE
REPRODUCED WITHOUT PERMISSION

GENERAL NOTES

- This drawing is to be read in conjunction with all other relevant Architect's, Engineers & Specialist drawings, details and the relevant Health and Safety Plan (as appropriate).
- DO NOT SCALE FROM THIS DRAWING. Use figured dimensions only.
- All dimensions to be confirmed prior to construction.
- ASBESTOS: Where the works are to an existing building, (or include Demolition), all site personnel and visitors are to have training in accordance with Regulation 10 of The Control of Asbestos Regulations 2006 and/or in accordance with the appropriate legislation current at the time. All works in respect of materials containing asbestos or suspected of containing asbestos are to be carried out strictly in accordance with the relevant legislation, if in doubt seek guidance from the Health and safety Executive.



Proposed Ground Floor

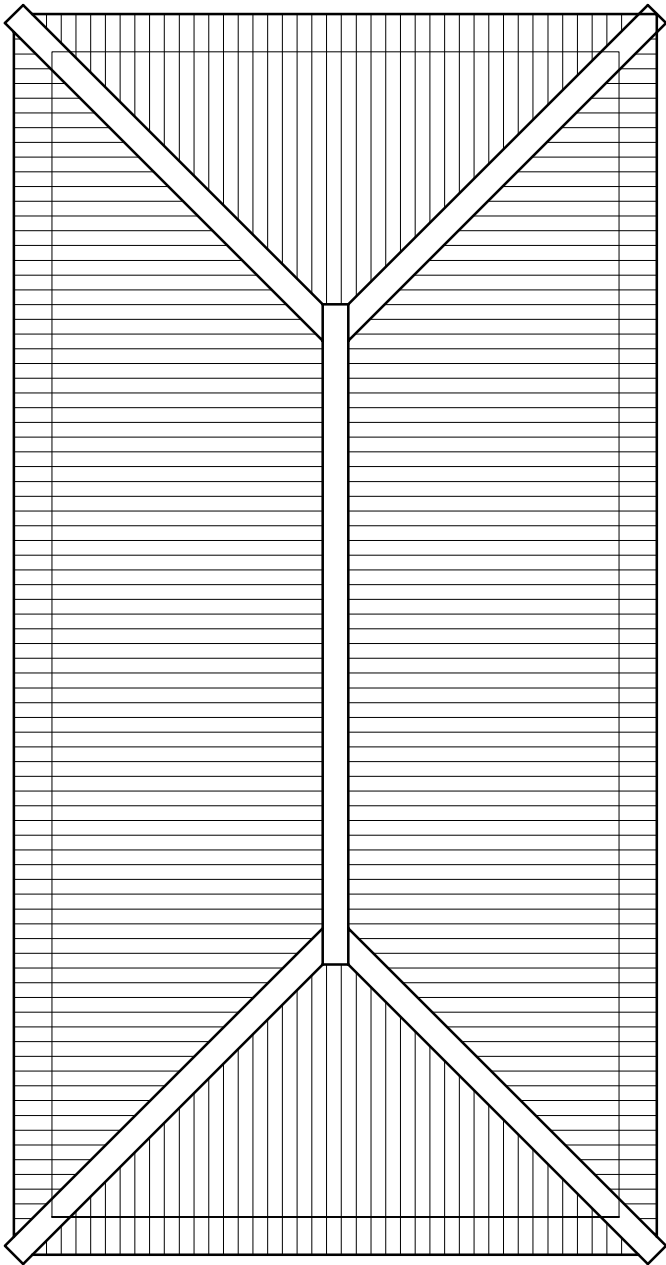
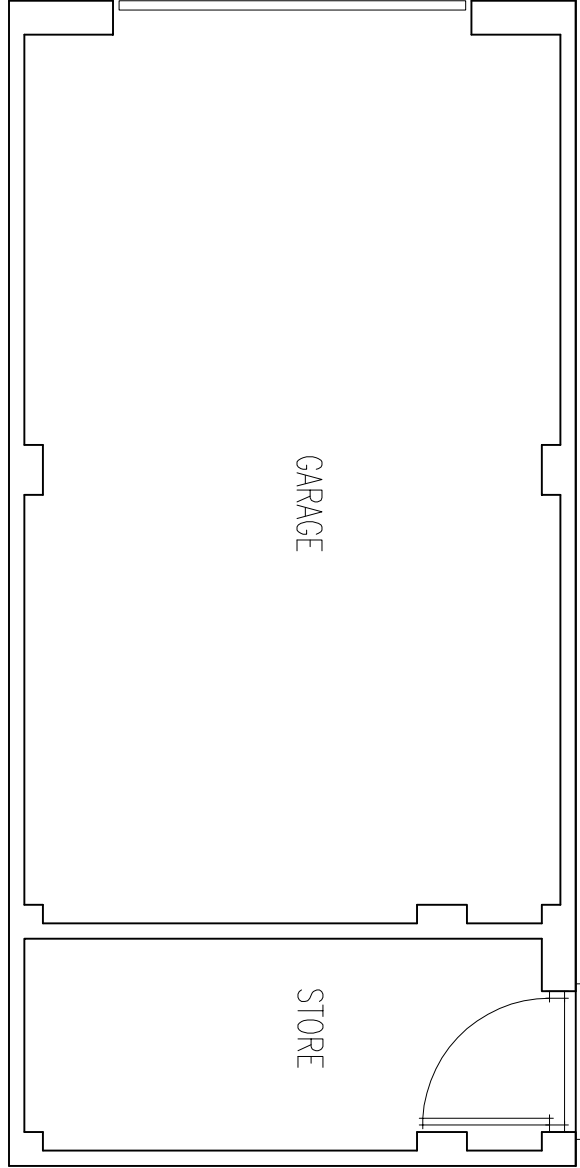
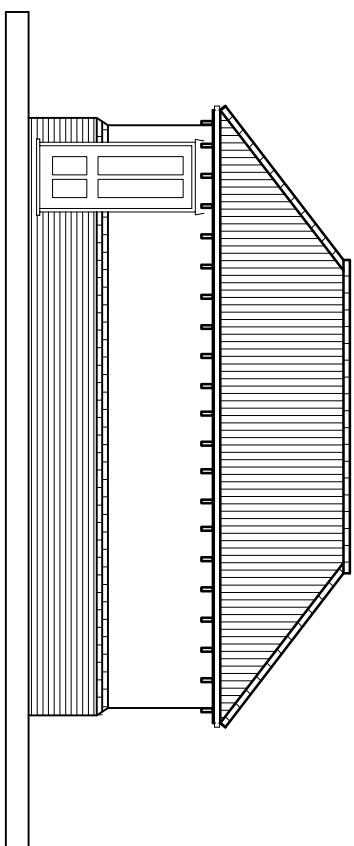
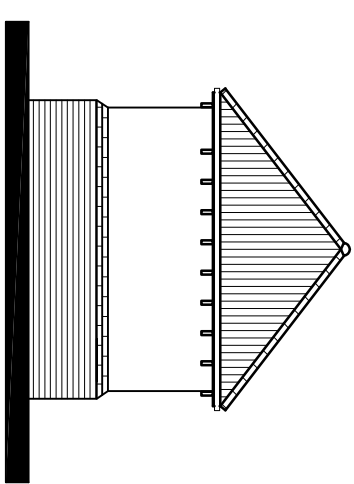
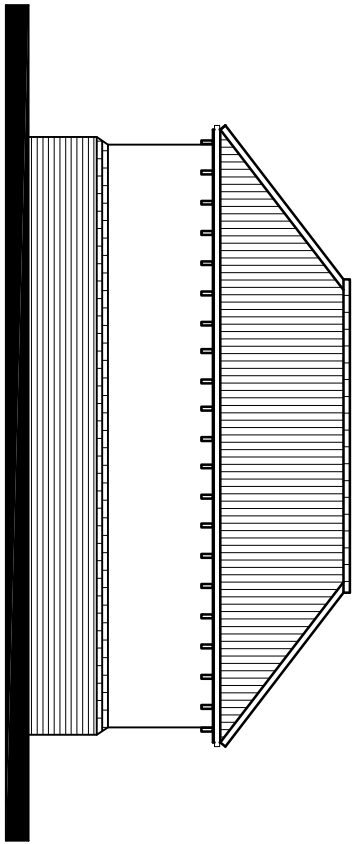
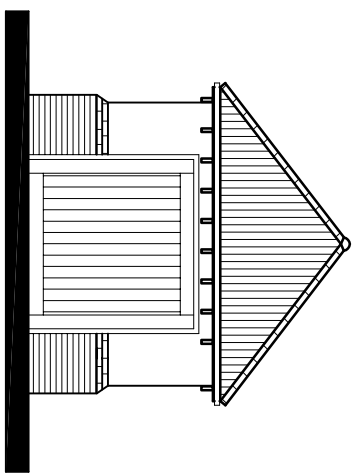
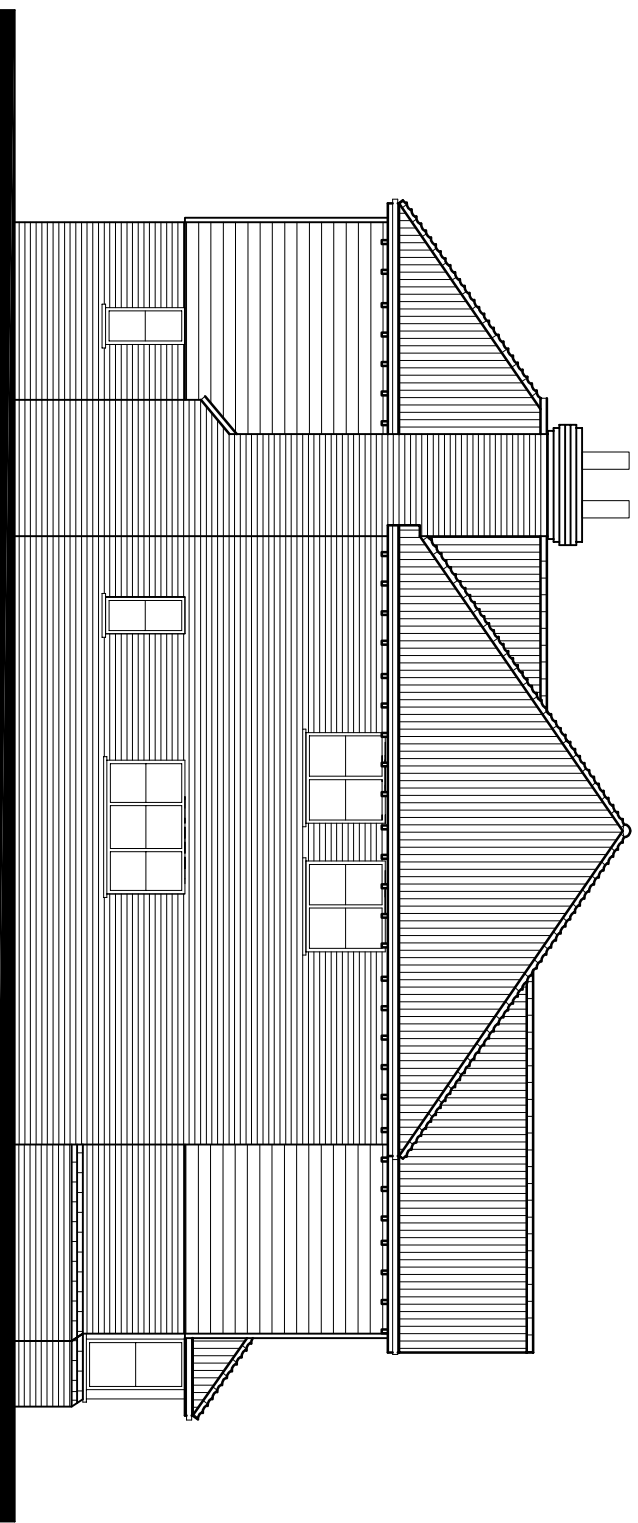
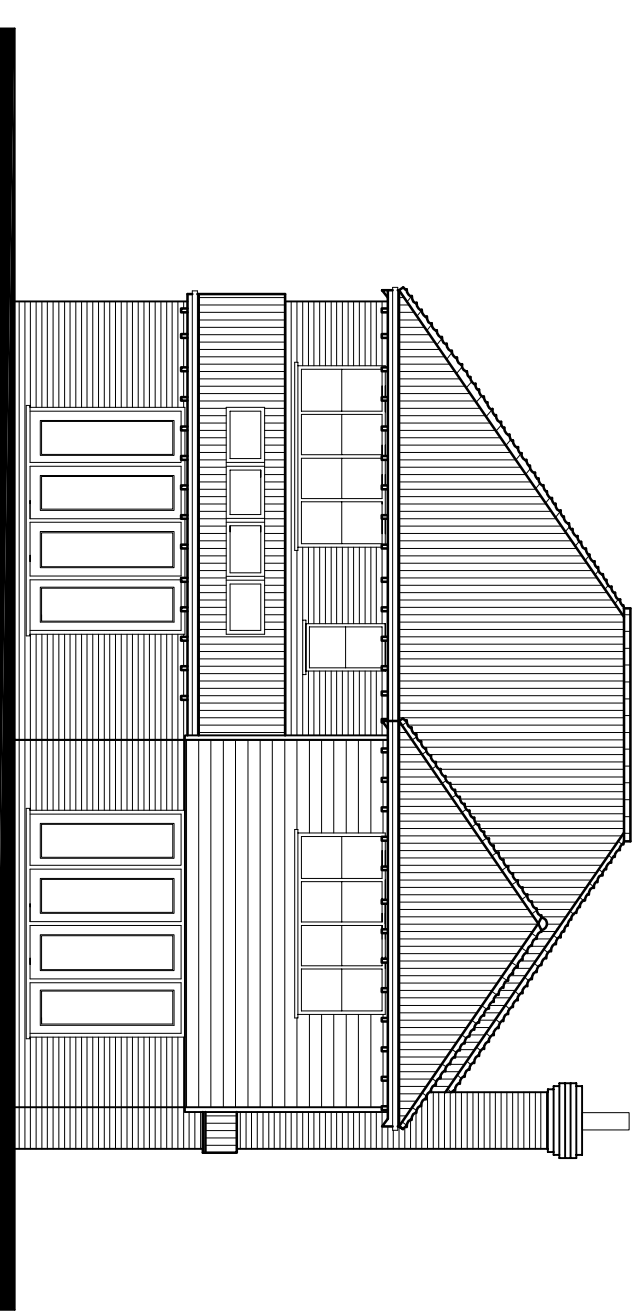
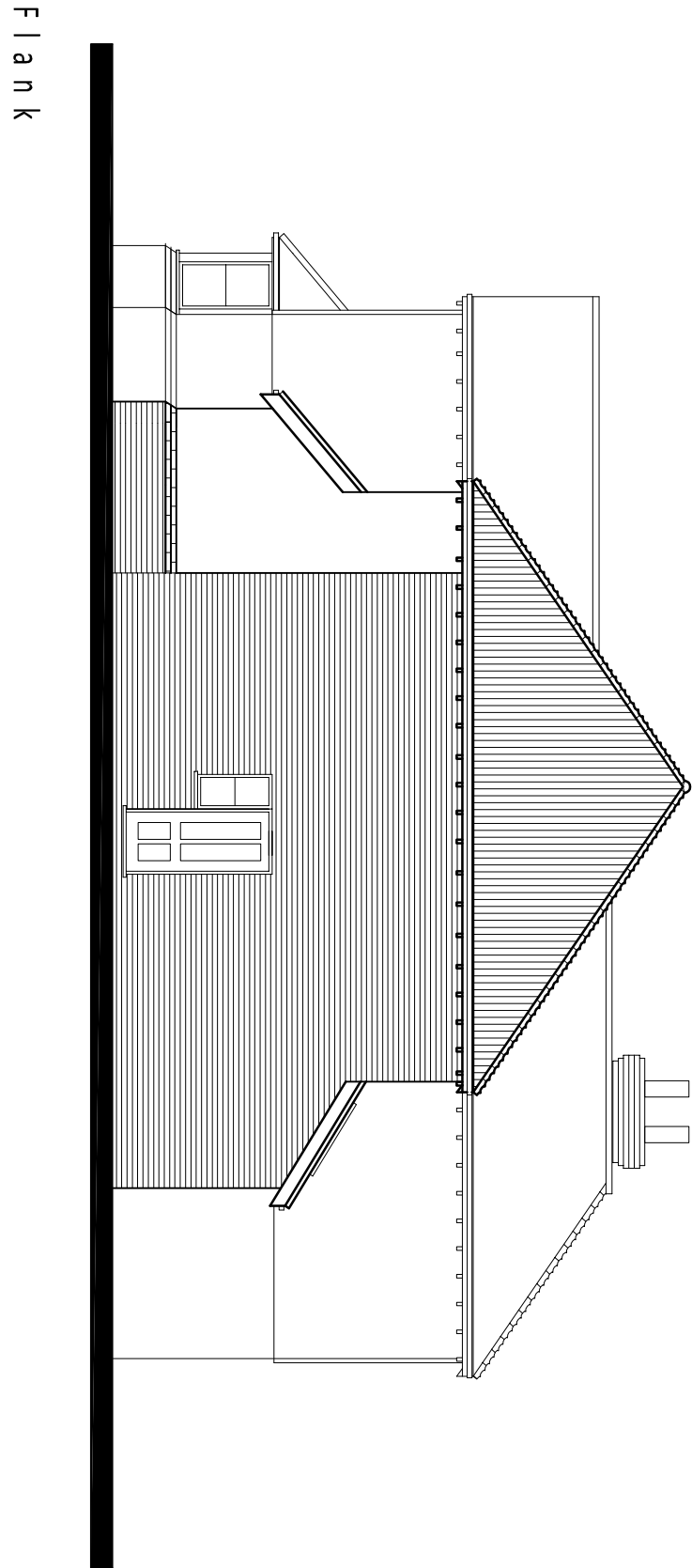


Proposed First Floor

D	14.09.12	Roof projection & Finishes	149	RD	
C	30.6.12	General Reduction in size / roof pitch	149	RD	
B	12.6.12	Reduction	149	RD	
A	28.6.12	Gen. mods to pre app comments	149	RD	
REV	DATE	REV	DRAWN	CHECKED	
RD Consulting sustainable technical solutions 8 Indulka Drive, Rydalmere, NSW 2108 T: 02 983 91388 F: 02 983 91389 E: info@rdconsulting.auk W: www.rdconsulting.auk					
Silverswan Homes					
10 The Paddock, Stock					
Plot 1					
Floor plans					
DATE	DRAWN	PROJECT No.			
22.05.12	IAB	12005			
SCALE	GRID	SCALE	REV		
1:50 @A1	RD	1	D		
THIS DRAWING IS COPYRIGHT OF RD CONSULTING AND NOT TO BE REPRODUCED WITHOUT PERMISSION			SCALE	Pre App	

GENERAL NOTES

- This drawing is to be read in conjunction with all other relevant Architect's, Engineers & Specialist drawings, details and the relevant Health and Safety Plan (as appropriate).
- DO NOT SCALE FROM THIS DRAWING. Use figured dimensions only.
- All dimensions to be confirmed prior to construction.
- ASBESTOS: Where the works are to an existing building, (or include Demolition), all site personnel and visitors are to have training in accordance with Regulation 10 of the Control of Asbestos Regulations 2005 and/or in accordance with the appropriate legislation current at the time. All works in respect of materials containing asbestos or suspected of containing asbestos are to be carried out strictly in accordance with the relevant legislation, if in doubt seek guidance from the Health and safety Executive.



Proposed Floor Plan

Roof Plan

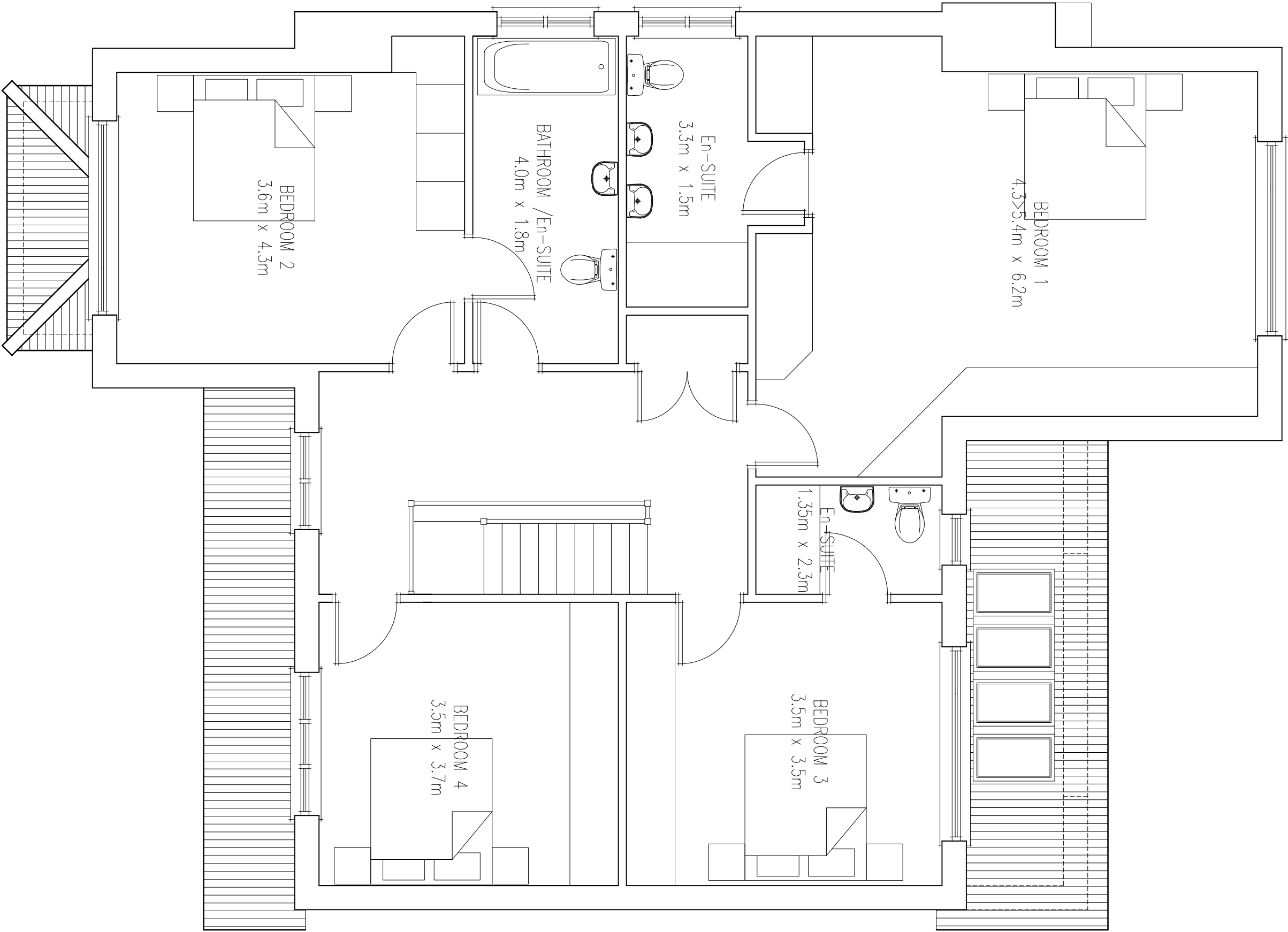
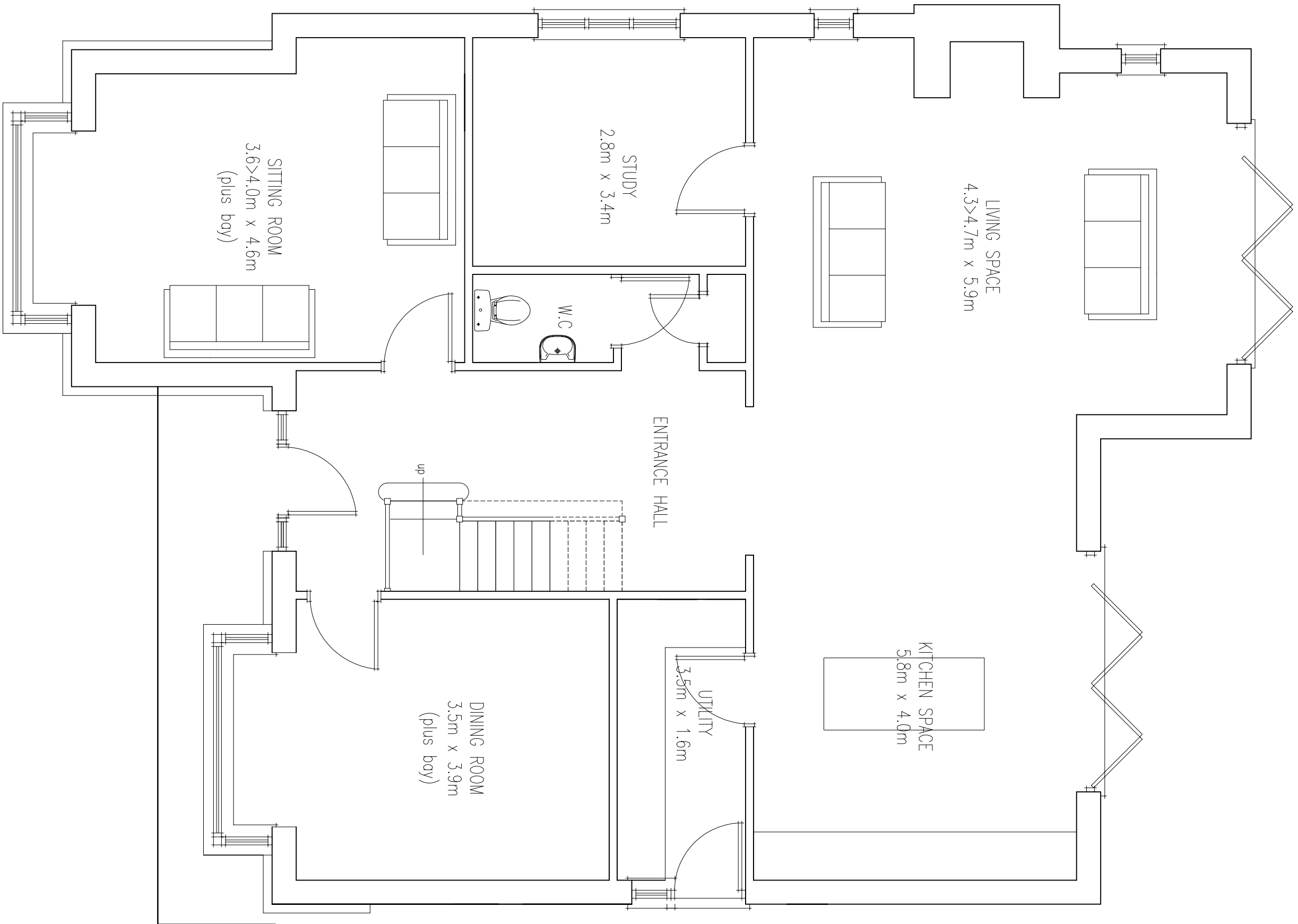
0	14.03.12	Rear projection and finishes	400	30	
C	30.8.12	General Reduction in slope / roof pitch	400	30	
B	12.8.12	Redesign	400	30	
A	2.7.12	Gen. mods	400	30	
REV	DATE	REV	DRAWN	CHECKED	
RD Consulting sustainable technical solutions 8 Indulka Close, Bideford, Devon, SS8 8EW T: 01288 41388 F: 01288 41388 E: info@rdconsulting.co.uk W: www.rdconsulting.co.uk					
Silverswan Homes					
10 The Paddock, Stock					
Plot 2 Elevations & Detached Garage					
DATE	DRAWN	PROJECT No.			
22.05.12	IAB	12005			
SCALE	GRAPH	SCALE	NO.	REV	
1:100 @A1	RD	4		D	
THIS DRAWING IS COPYRIGHT OF RD CONSULTING AND NOT TO BE REPRODUCED WITHOUT PERMISSION			SCALE	Pre App	

Proposed Floor Plan

Roof Plan

GENERAL NOTES

- This drawing is to be read in conjunction with all other relevant Architect's, Engineers & Specialist drawings, details and the relevant Health and Safety Plan (as appropriate).
- DO NOT SCALE FROM THIS DRAWING. Use figured dimensions only.
- All dimensions to be confirmed prior to construction.
- ASBESTOS: Where the works are to an existing building, (or include Demolition), all site personnel and visitors are to have training in accordance with Regulation 10 of the Control of Asbestos Regulations 2006 and/or in accordance with the appropriate legislation current at the time. All works in respect of materials containing asbestos or suspected of containing asbestos are to be carried out strictly in accordance with the relevant legislation, if in doubt seek guidance from the Health and safety Executive.



D	14.08.12	Rear Projection and Friezes	140	20
C	30.8.12	General Redaction in site / road plans	140	20
B	12.08.12	Notation	140	20
A	JULY 12	GENERALLY REVERSED	140	20
REV	DATE	REV	DRAWN	CHECKED

RD Consulting
sustainable technical solutions

T: 01283 41388
F: 01283 41393
E: info@rdconsulting.co.uk
W: www.rdconsulting.co.uk

Silverswan Homes

10 The Paddock,
Stock

Plot 2
Ground & first floor plans

DATE	DRAWN	PROJ. No.
22.05.12	IAB	12005
SCALE	CHKD	DWG. No
1:50 @A1	RD	3
		REV
		D

THIS DRAWING IS COPYRIGHT © RD CONSULTING
REPRODUCED WITHOUT PERMISSION

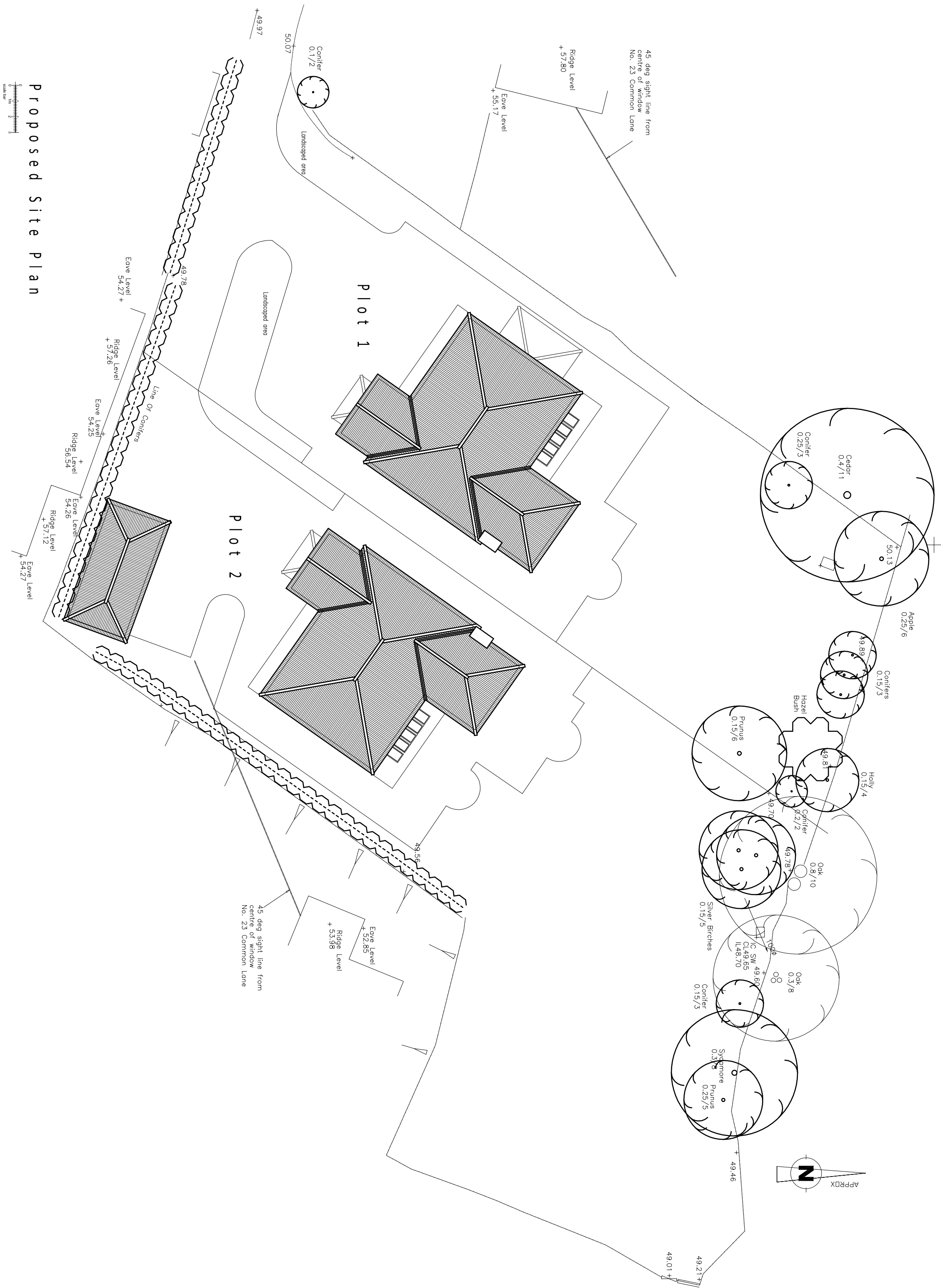
Pre App

GENERAL NOTES

- The drawing is to be read in conjunction with all other relevant Architect's, Engineer's & Specialist drawings, details and the relevant Health and Safety Plan (as appropriate).
- DO NOT SCALE FROM THIS DRAWING. Use figured dimensions only.
- All dimensions to be confirmed prior to construction.
- ASBESTOS: All the persons and visitors are to have training in accordance with Regulation 10 of the Control of Asbestos Regulations 2006 and/or in accordance with the appropriate legislation current at the time. All works in respect of materials containing asbestos or suspected of containing asbestos are to be carried out strictly in accordance with current legislation, it is doubt seek guidance from the Health and safety Executive.



Indicative Street Scene



D	14.09.12	Rear projection omitted	149	80
C	30.8.12	General Reduction in size / roof pitch	149	80
B	12.08.12	REDRAWN	149	80
A	2.7.12	GEN WOODS	149	80
REV	DATE	REV	DSWIM	CHECKED

RD Consulting

sustainable technical solutions

Grafde Ploeg, Dutchess County, NY 12520

T. 01268 741363
F. 01268 741368
E. info@doctors.uk

W. www.5doors.co.uk

Silver Swan Homes

10 The Paddock,
Stock

Site Plan / Roof Plan &
Street Scene

DATE	DDMMYY	PROJ. No.	
22.05.12	IAB	12005	
SCALE	CHRD	DWG. No	REV
1:100 & 1:200 GMI	RD	5	D

THIS DRAWING IS COPYRIGHT OF RD
CONSULTING AND MAY NOT BE
REPRODUCED WITHOUT PERMISSION

STAGE
Pre App